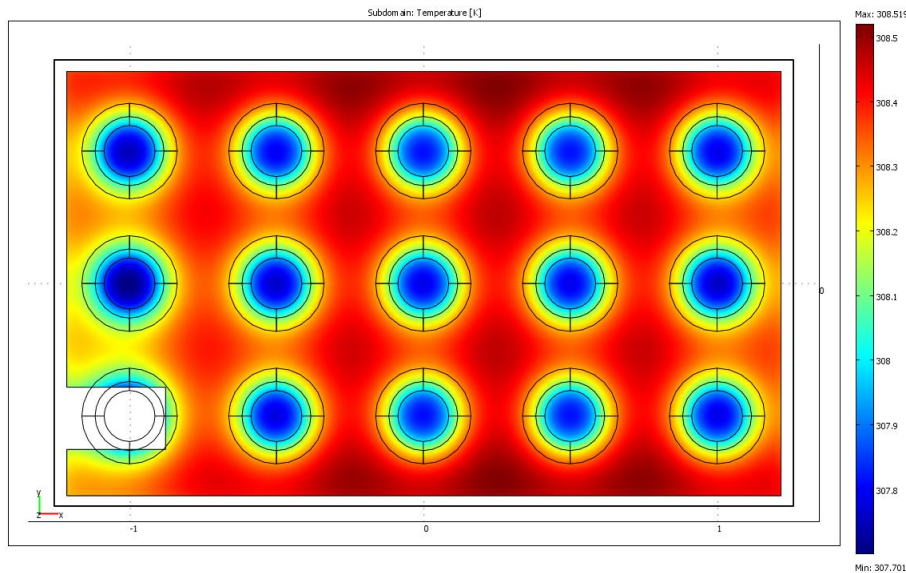
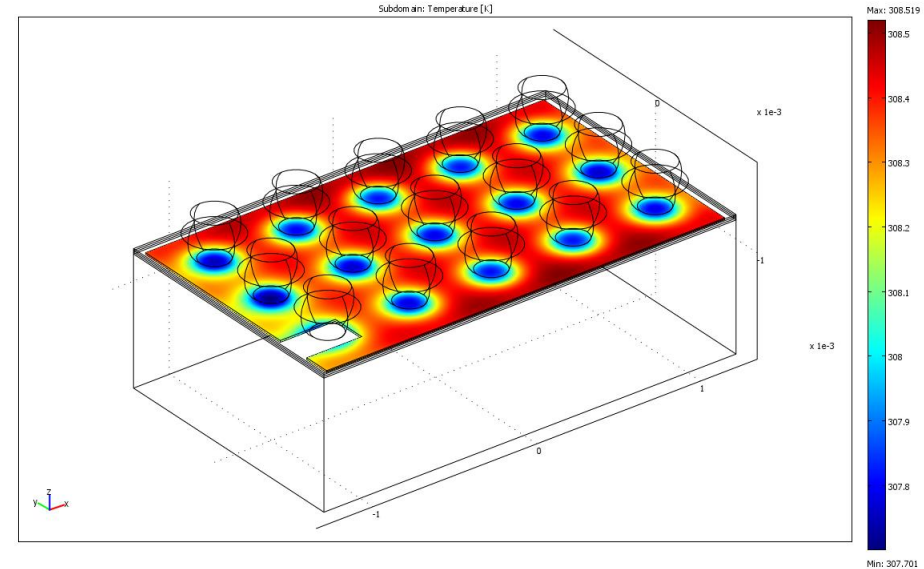


EPC2045 Thermal Model

$R_{\theta JB}$ & $R_{\theta JC}$

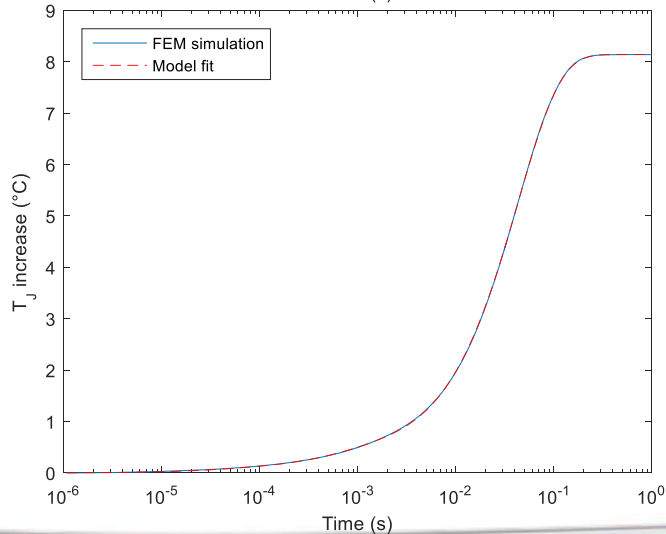
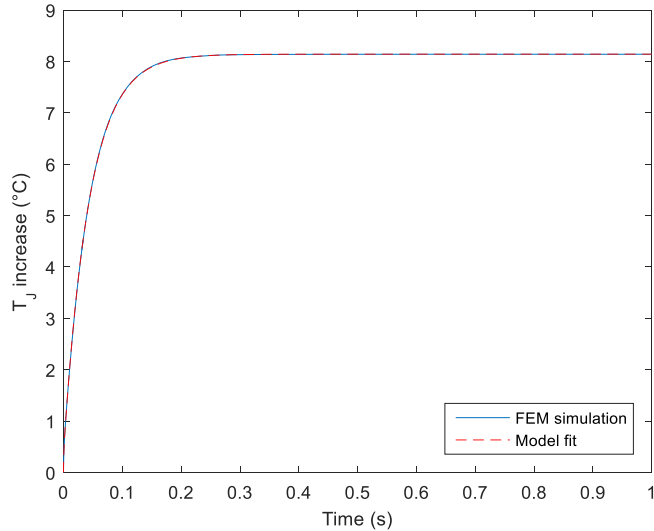
Steady State $R_{\theta JB}$

$$R_{\theta JB} = 8.519 \text{ } ^\circ\text{C/W}$$

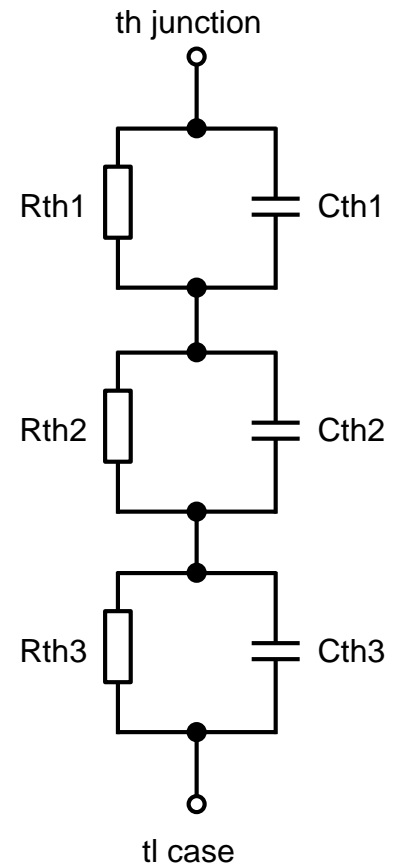


Transient $R_{\theta JB}$

Transient junction temperature as a function of time under 1W load

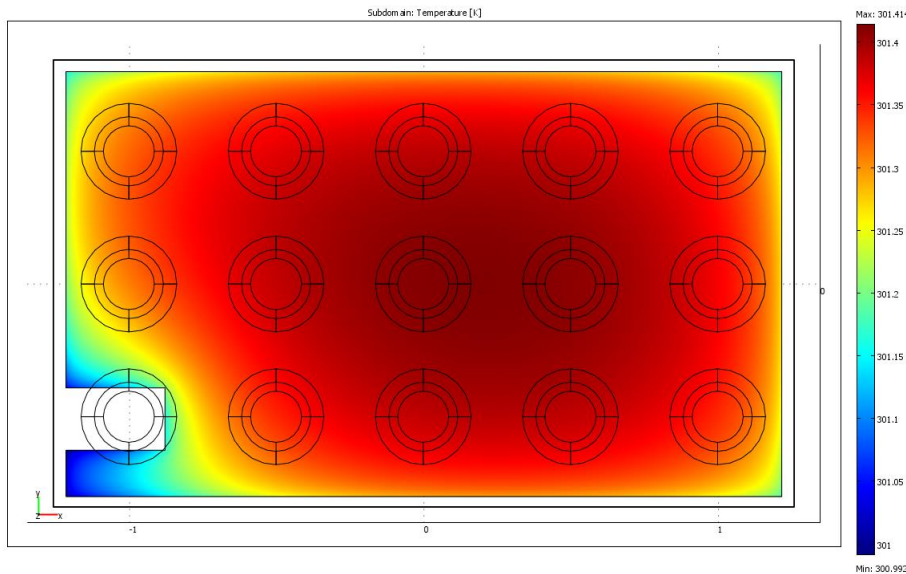
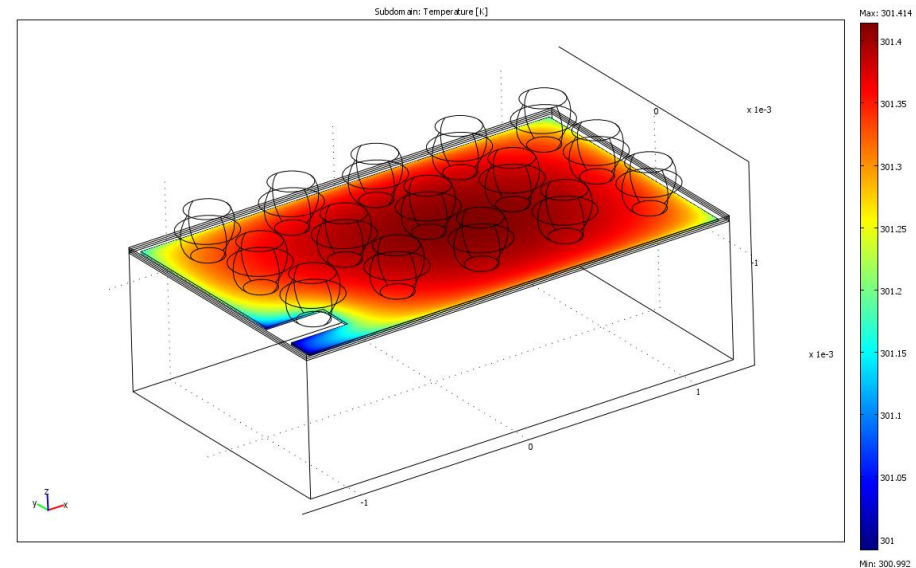


Fitting parameter	Value
Rth1	8.12 °C/W
Cth1	5.62E-3 J/°C
Rth2	4.51E-1 °C/W
Cth2	1.94E-3 J/°C
Rth3	1.13E-1 °C/W
Cth3	5.23E-4 J/°C



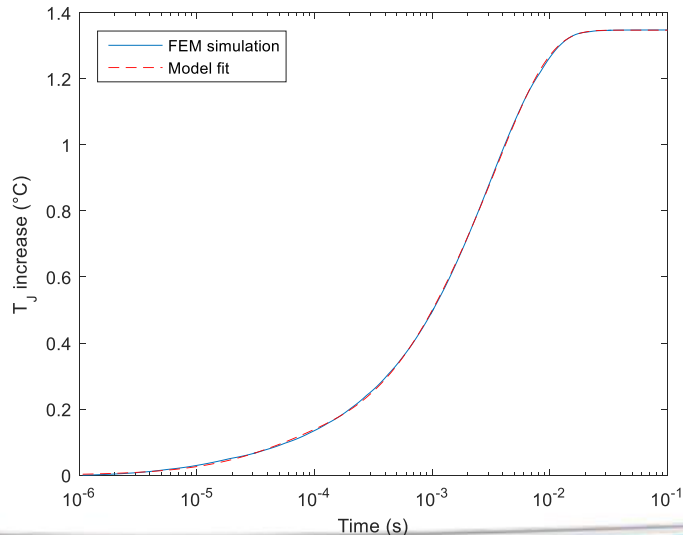
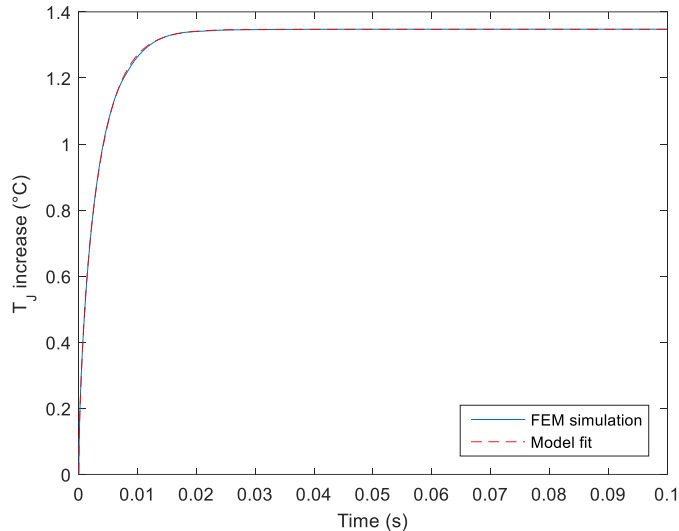
Steady State $R_{\theta JC}$

$$R_{\theta JC} = 1.414 \text{ } ^\circ\text{C/W}$$



Transient $R_{\theta JC}$

Transient junction temperature as a function of time under 1W load



Fitting parameter	Value
Rth1	1.08 °C/W
Cth1	3.74E-3 J/°C
Rth2	2.38E-1 °C/W
Cth2	3.04E-3 J/°C
Rth3	9.35E-2 °C/W
Cth3	4.44E-4 J/°C

